

BALOGH



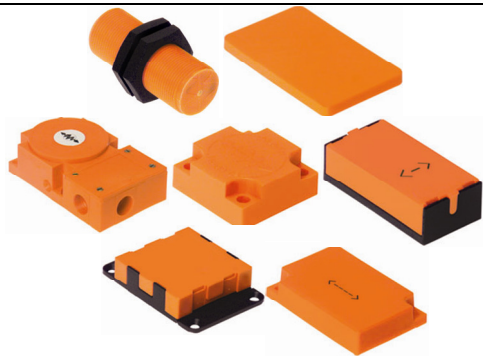
# OMA Tag Series

## Industrial Read/Write Tags

### 64 Byte/2K Byte/8K Byte

**Passive Industrial RFID Tags**

**Orange Product Range**

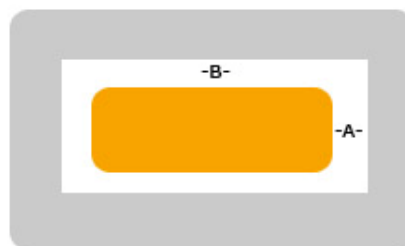


### Common Tag Characteristics

- Read/Write
- No needed power source (Passive Technology)
- Ferro-Electric Ram
- 10<sup>10</sup> Write Cycles, Unlimited Reads
- Typical R/W Time 50 ms Instruction + 10 ms per Byte
- -25°C up to 85°C Operating Temperature
- Rilsan Housing with Urethane Potting
- IP 67

### Tag Environment

- OMA Series tags can be mounted recessed in metal, as long as a metal free clearance on the sides of the tag is observed.
- Please use the chart below to see specific metal clearance tolerances for each OMA Tag.



### Transceiver Compatibility Chart

Tag Style	ERA-18	ERA-85	ERA-80	ERO-71	ERO-85	ERO-100	ERO-80	TLEB-891	Memory	Metal Clearance
181	18 mm	--	--	--	--	--	--	--	64	A and B ≥ 10 mm
711	--	--	--	20 mm	70 mm	70 mm	--	30 mm	64, 2K, 8K	A and B ≥ 10 mm
731	--	--	--	16 mm	52 mm	52 mm	70 mm	20 mm	64	A and B ≥ 10 mm
831	--	--	28 mm	25 mm	80 mm	80 mm	120 mm	--	64, 2K, 8K	A and B ≥ 10 mm
851	--	--	40 mm	--	100 mm	100 mm	160 mm	--	64, 2K, 8K	A and B ≥ 30 mm
931	--	--	32 mm	25 mm	80 mm	80 mm	120 mm	30 mm	64, 2K, 8K	A and B ≥ 10 mm

## Distance Between Tags and Other Information

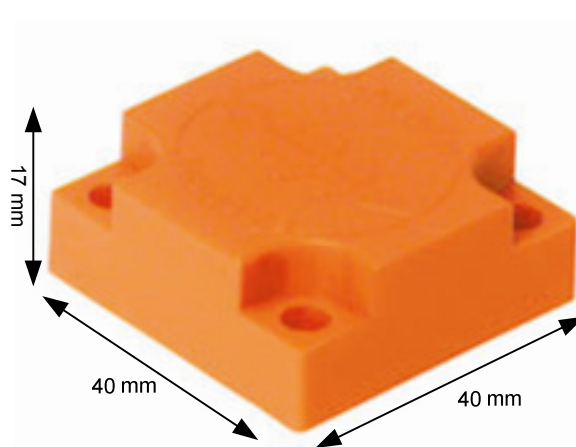
Tag Style	ERA-18	ERA-85	ERA-80	ERO-71	ERO-85	ERO-100	ERO-80	TLEB-891	Weight	
181	24 mm	--	--	--	--	--	--	--	30 g	
711	--	--	--	75 mm	240 mm	240 mm	--	125 mm	35 g	
731	--	--	--	72 mm	162 mm	162 mm	172 mm	170 mm	25 g	
831	--		320 mm	75 mm	240 mm	240 mm	360 mm		100 g	
851	--	--	500 mm	--	330 mm	330 mm	540 mm	--	600 g	
931	--	--	320 mm	75 mm	240 mm	240 mm	360 mm	170 mm	100 g	

## OMA Tags

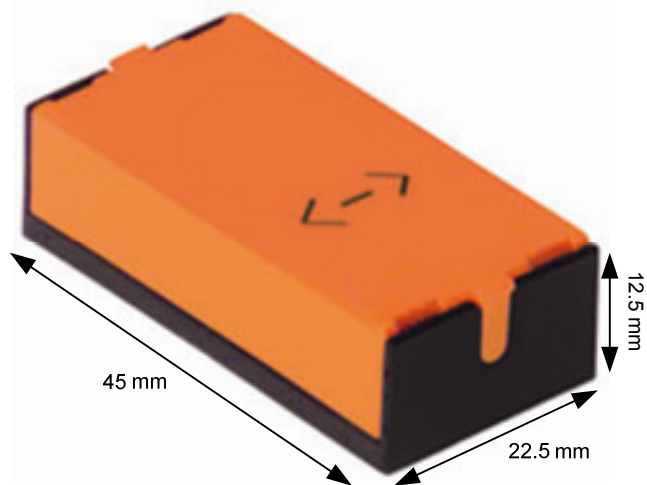
**OMA-181**



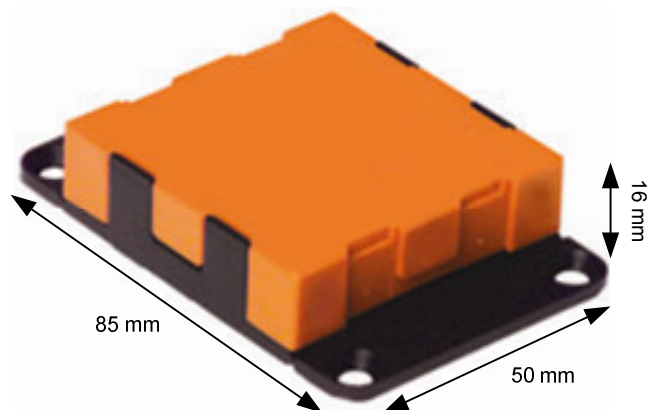
**OMA-711**



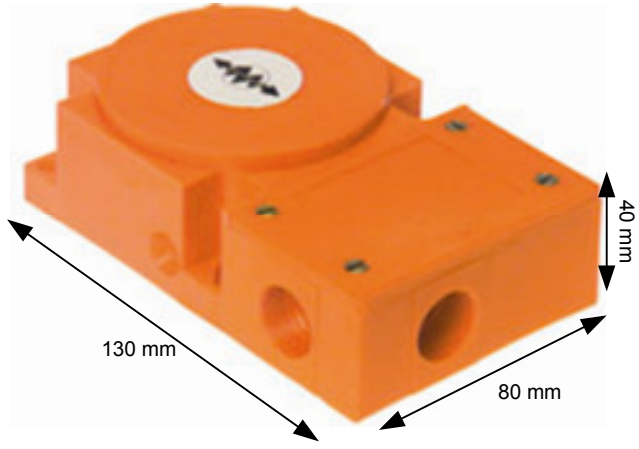
**OMA-731**



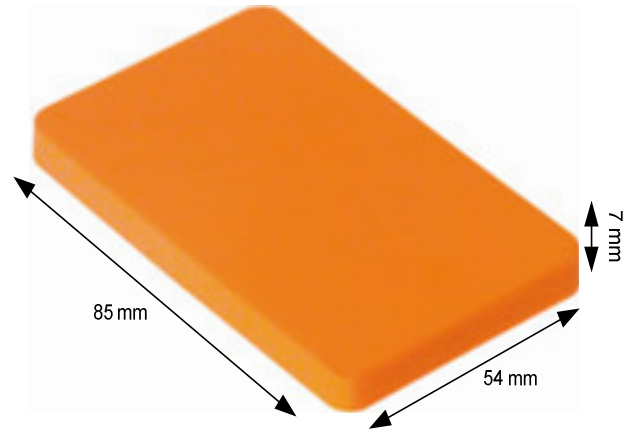
**OMA-831**



**OMA-851**



**OMA-861**



**OMA-931**

